

**MODERN
SLAVERY
PARTNERSHIP**

HAMPSHIRE AND ISLE OF WIGHT

Modern Slavery Partnership Strategy

2021 - 2023

FOREWORD



Modern Slavery is a hidden crime, but there can be signs in plain sight. We are all responsible for being alert to the risks of modern slavery and reporting any concerns we have. This is not just a crime that happens in other countries, it could be taking place behind closed doors on the streets we walk down on a daily basis.

The crime of modern slavery within the UK and our local area remains a significant threat with the number of victims identified rising each year. This crime is non-discriminatory; with children, women and men being exploited, often repeatedly in heinous crimes.

There is an estimated 40.3 million modern slavery victims worldwide, and as per the Global Slavery Index an estimate of 136,000 modern slavery victims within the UK. However official recorded figures we have are considerably lower at 10,613 for the UK, which shows that Modern Slavery remains largely undetected and that more needs to be done to identify and safeguard victims and bring perpetrators to justice.

Partnership working is key to tackling Modern Slavery and this is highlighted within the Independent Anti-Slavery Commissioner's Strategic Plan. The Hampshire and Isle of Wight Modern Slavery Partnership, facilitated by my office, has gone from strength to strength since its creation. There are now more than 50 partners on board all working together to make Hampshire a supportive place for victims and a hostile place for perpetrators of slavery.

This updated strategy has been written in line with key learning from our Partners, as well as the Government's Modern Slavery Strategy and the new priorities of the Independent Anti-Slavery Commissioner. It sets out our commitments in relation to improving the identification of and support for victims of modern slavery, to actively seek out intelligence in order to catch offenders, and working together to increase prosecutions.

Everyone deserves to live their life free of coercion, control and fear. We will continue our fight against modern slavery.

Donna Jones

A handwritten signature in black ink that reads "Donna Jones." The signature is written in a cursive, flowing style.

Police and Crime Commissioner
Serving Hampshire, Isle of Wight, Portsmouth and Southampton

INTRODUCTION

Modern slavery is a crime, which violates human rights, denying people of their right to life, freedom and security. It is estimated over 40 million people globally live in slavery today. The Global Slavery Index estimated that there were 136,000 people living in modern slavery in the United Kingdom. Organised crime groups and criminals use coercion, deception, threats or violence to exploit victims into slavery and to keep them in slavery. Modern slavery is an umbrella term, which involves the exploitation of children and adults and may encompass but is not limited to:

- Criminal exploitation
- Domestic servitude
- Human organ harvesting
- Labour exploitation
- Sexual exploitation

OUR DUTY

The Modern Slavery Act 2015 (MSA 2015) applies to England and Wales, and includes the offences of human trafficking and slavery, servitude and forced or compulsory labour. The Act consolidated and simplified existing offences and establishes a legal duty for specified public authorities to notify the Home Office where there is reasonable grounds to believe a person may be a victim of modern slavery.

A review of the MSA 2015 was concluded in 2019 and the main considerations included to strengthen obligations under s.54: supply chain transparency, appointing an International Modern Slavery and Migration Envoy and continuing to roll out Independent Child Trafficking Guardians.

Modern slavery cannot be addressed by one organisation alone. As a consequence the Hampshire and Isle of Wight Modern Slavery Partnership was established in September 2015 to provide coordination and multi-agency solutions to tackle modern slavery.

THE CONTEXT

There were over 1,400 active investigations involving modern slavery across the UK at the end of 2019, and last year saw the largest ever-successful prosecution of a slavery gang in the UK

The strategy to tackle Modern Slavery in Hampshire and the Isle of Wight has been developed in line with the Government's Modern Slavery Strategy

- Pursue – Prosecute and disrupt individuals and groups responsible for slavery
- Prevent – Prevent people from engaging in slavery
- Protect – Strengthen safeguards against slavery by protecting vulnerable people from exploitation and increasing awareness of and resilience against this crime
- Prepare – Reduce the harm caused by slavery through improved victim identification and support

THE NEW PARTNERSHIP

The Modern Slavery Partnership of Hampshire and Isle of Wight underwent a restructuring at the end of 2019 to ensure the Partnership remained outcome focused. The new structure comprises a Steering Group and 3 Sub-Groups: Prevent/Training & Raising Awareness, Protect/Victim Support and Pursue. The Steering Group is acting as the 4th 'P' or Prepare group. Each group has been given a specific functionality:

Prepare/Steering Group to work in partnership, which sits at the core of the Modern Slavery Partnership as a whole by bringing agencies together in the fight against modern slavery

Prevent to raise awareness of the issue of modern slavery through training, sharing of best practice, communications and events.

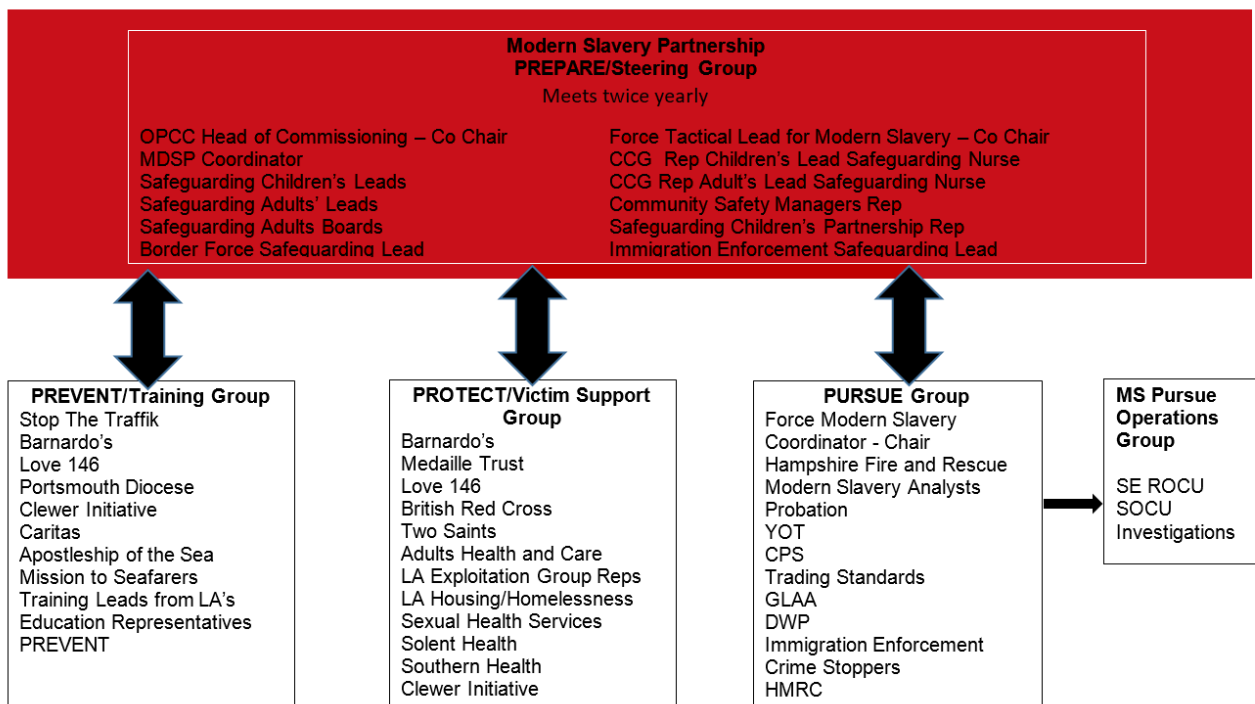
Protect to identify and support victims of modern slavery through coordination of statutory and non-statutory agencies and the sharing of joined up working practices, current legislation, research and best practice.

Pursue to pursue perpetrators by actively seeking intelligence and partnership working to increase prosecutions

The new Partnership structure also brought a new governance; under the Integrated Public Services Board that fits with how the Partnership has developed over the last few years.

A Partnership Coordinator is now in place that works across the Office of Police and Crime Commissioner for Hampshire and Isle of Wight and Hampshire Constabulary.

The Partnership remains as a multi-agency group recognising the contributions of statutory and non-statutory agencies. A pictorial outline of the new structure is below.



THE VISION

To make Hampshire, the Isle of Wight, Portsmouth & Southampton a supportive place for victims and, a hostile place for perpetrators of Modern slavery

THE STRATEGIC OBJECTIVES

SO1

PREPARE: TO COMBAT MODERN SLAVERY BY WORKING IN PARTNERSHIP

SO2

PREVENT: TO RAISE AWARENESS OF MODERN SLAVERY

SO3

PROTECT: TO IDENTIFY AND SUPPORT VICTIMS OF MODERN SLAVERY

SO4

PURSUE: TO PURSUE PERPETRATORS OF MODERN SLAVERY

SO1

PREPARE: TO COMBAT MODERN SLAVERY BY WORKING IN PARTNERSHIP

WHY?

- Modern slavery is a multifaceted issue requiring a co-ordinated partnership response.
- Effective partnerships enable information sharing, resource co-ordination and strategic planning.
- Supports the Government's Prevent agenda by ensuring a co-ordinated approach to preventing people from engaging in slavery.

HOW?

- Ensure the Partnership is reflective of Hampshire's diverse community establishing strong links between law enforcement agencies, Local Authorities, Health, Non-Governmental Organisations, Faith Groups and the Business Sector. This must also be effective from the Isle of Wight.
- Ensuring the Steering Group has representation from strategic, safeguarding leads from each agency to ensure the support of the Sub-Groups to achieve their objectives.
- Develop a clear information reporting and sharing protocol between parties.
- Ensure modern slavery is firmly on the agenda for Community Safety Partnerships, Children's Safeguarding Partnerships, Adults Safeguarding Boards and Health & Wellbeing Partnerships.
- Encourage all organisations within Hampshire with a turnover above £36 million and the promotion of those below this limit to publish an annual statement describing the steps they have taken to ensure modern slavery is not present within their business or supply chains as required by the MSA 2015.
- Develop a 4 LSAB Modern Slavery Information Guide as best practice guidance to front line professionals.

OUTCOMES?

INCREASED INFORMATION SHARING AND RESOURCE COORDINATION.

SO2

PREVENT: TO RAISE AWARENESS OF MODERN
SLAVERY

WHY?

-
- Frontline professionals such as Local Authorities, Health and the Department for Work and Pensions are often best placed to identify potential victims.
 - Everyday services accessible by everybody are being used to facilitate modern slavery without communities being able to recognise the signs.
 - Aligns with the Government Protect agenda by increasing awareness of and resilience against modern slavery.

HOW?

-
- Complete a Modern Slavery training audit amongst key partners to identify gaps in knowledge.
 - Development of awareness raising and training materials for use by partner agencies as well as delivering an annual event to mark Anti-Slavery Day.
 - Targeted training to MASH and other front line teams.
 - Utilise the Partnership's Modern Slavery website to ensure information and advice is available for professionals and the public.
 - Maintain links with Clewer Initiative and in turn faith communities and learn from best practice.

OUTCOMES?

INCREASED REPORTING OF MODERN SLAVERY FROM PROFESSIONALS AND THE PUBLIC.
INCREASED UNDERSTANDING AMONGST PROFESSIONALS OF THEIR RESPONSIBILITIES

SO3

PROTECT: TO IDENTIFY AND SUPPORT VICTIMS OF MODERN SLAVERY

WHY?

- Estimated number of victims in the UK is approximately thirteen times greater than those referred to the National Referral Mechanism (As per The Global Slavery Index).
- Victims often suffer from poor physical and emotional health, which will require ongoing support.
- Aligns with the Government's Prepare agenda by reducing the harm caused by slavery through improved victim identification and enhanced support.

HOW?

- Develop victim pathways with clearly identified roles and responsibilities of partners.
- Conduct a mapping exercise of support provision in the area for potential victims and consider the application of funding gaps in current provision.
- Engage with partners in the Homeless sector to progress the recommendations in the report 'Understanding and Responding to Modern Slavery within the Homeless Sector' and production of an Accommodation Checklist as guidance for new providers.
- Ensure partners engage with, and support, the Home Office Independent Child Trafficking Guardian (ICTG) Service delivered by Barnardo's and understand their duty to refer any potential, or confirmed, victim of child trafficking in line with the MSA 2015.
- Exploring challenges experienced by Post-18 victims of Modern Slavery and potential solutions available as a multi-agency team.

OUTCOMES?

INCREASED IDENTIFICATION AND ENHANCED SUPPORT FOR VICTIMS.

SO4

PURSUE: TO PURSUE PERPETRATORS OF MODERN SLAVERY

WHY?

- The current low prosecution rate nationally means that modern slavery is a high profit and relatively low risk crime.
- Crime recording plays a key role in investigating and disrupting criminal networks.
- Aligns with the Government's Pursue agenda by increasing investigations and prosecutions of modern slavery offences.

HOW?

- Collate the NRM and 'Duty to Notify' referrals for Hampshire by unitary to establish communities most at risk, potential training needs and best practice.
- Produce an infographic for sharing with partners to include headline statistics, perpetrator and victim profiles to be broken down by unitary where data allows.
- Strengthen the link between the Hampshire Constabulary Pursue Group and the Modern Slavery Partnership to increase information flow and intelligence submissions from partners to improve the evidence base for the modern slavery Problem Profile and support prosecutions.
- Collate learning from modern slavery investigations by deep dive audits and sharing best practice.
- Proactively work with and understand other law enforcement agencies powers and remit to jointly disrupt modern slavery in partnership.
- Increase the use of Slavery and Trafficking Prevention Orders and Slavery and Trafficking Risk Orders by enforcement agencies to disrupt and prevent.

OUTCOMES?

INCREASE IN THE NUMBER OF SUCCESSFUL PROSECUTIONS FOR MODERN SLAVERY.

THE DELIVERY

This Strategy sets out the overarching vision and strategic objectives for the Hampshire and Isle of Wight Modern Slavery Partnership for 2020-2023.

Successful delivery of this plan is dependent upon all partners proactively supporting the agreed Vision, to make Hampshire, the Isle of Wight, Portsmouth and Southampton a supportive place for victims and a hostile place for perpetrators. Within Hampshire and the Isle of Wight there is a history of strong partnership working from both statutory agencies including Local Authorities, Emergency Services, Health and law enforcement agencies to non-statutory agencies including local charities and faith organisations and this will be a critical factor for ensuring the successful implementation of the strategy.

Progress against this plan will be monitored quarterly through the Modern Slavery Partnership meeting. A formal review of partnership delivery against the strategy will be undertaken annually.

The Modern Slavery Partnership will be chaired and facilitated by the Police and Crime Commissioner (PCC). Where funding is required to support delivery of the strategy the Modern Slavery Partnership will proactively support and seek suitable funding options.

Governance will be provided to the Modern Slavery Partnership from the Hampshire and Isle of Wight Integrated Public Services Board, which will be provided with an annual report outlining delivery against the strategy. The Modern Slavery Partnership Strategy and delivery structure will be reviewed again in October 2021.



Find out more about modern day slavery:

Visit our website

www.modernslaverypartnership.org.uk

Contact the partnership co-ordinator via
the Office for the Police and Crime
Commissioner:

01962 871595

opcc@hampshire.pnn.police.uk

