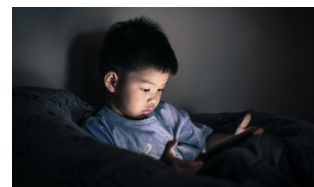
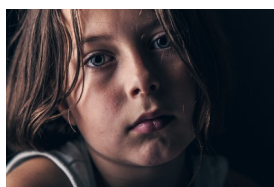


# Concerned for a child?

The Government has asked parents to keep their children at home wherever possible, and for schools to remain open only for children who are vulnerable and for those children of workers critical to the coronavirus (COVID-19) response who absolutely need to attend.

While in lockdown, there is the potential that children could be at an increased risk of harm relating to:

- ◆ Self-harm and wellbeing
- ◆ Online exploitation
- ◆ Abuse and neglect by parents/carers



### Signs to look out for:

- ◆ Bruising in babies
- ◆ Bite marks
- ◆ Unusual weight loss, malnutrition, dehydration
- ◆ Withdrawn, unusual behaviour
- ◆ Unsanitary living conditions
- ◆ Unsuitable clothing, particularly for the time of year

### Are you concerned about the safety or welfare of a child?

You do not need to know everything about the child before contacting Children's Services. If you are concerned, it is important that you talk to someone about this.

#### Contact: Children's Services

**Hampshire:** 0300 555 1384  
**Isle of Wight:** 0300 300 0117  
**Southampton:** 023 8083 3336  
**Portsmouth:** 023 9268 8793

### Are you concerned about someone working with children?

If you are concerned about the professional conduct of a member of staff, either in a paid or voluntary capacity, please contact the Local Area Designated Officer (LADO).

#### Contact: LADO

**Hampshire:** 01962 876364  
**Isle of Wight:** 01983 823 723  
**Southampton:** 023 8091 5535  
**Portsmouth:** 023 9288 2500

### Do you work in the community?

If your job involves entering people's homes and something concerns you regarding a child, please contact Children's Services.

#### Contact: Children's Services

**Hampshire:** 0300 555 1384  
**Isle of Wight:** 0300 300 0117  
**Southampton:** 023 8083 3336  
**Portsmouth:** 023 9268 8793



### Safeguarding Adults contact numbers

If you are concerned about the welfare of an adult, including those with care and support needs, please contact Adult Services in your local area:

**Hampshire:** 0300 555 1386  
**Isle of Wight:** 01983 814980  
**Southampton:** 023 8083 3003  
**Portsmouth:** 023 9268 0810